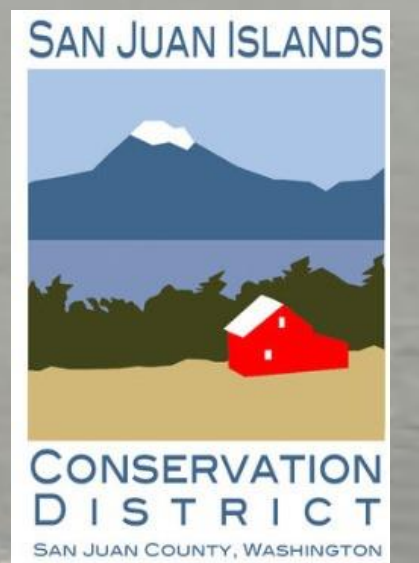
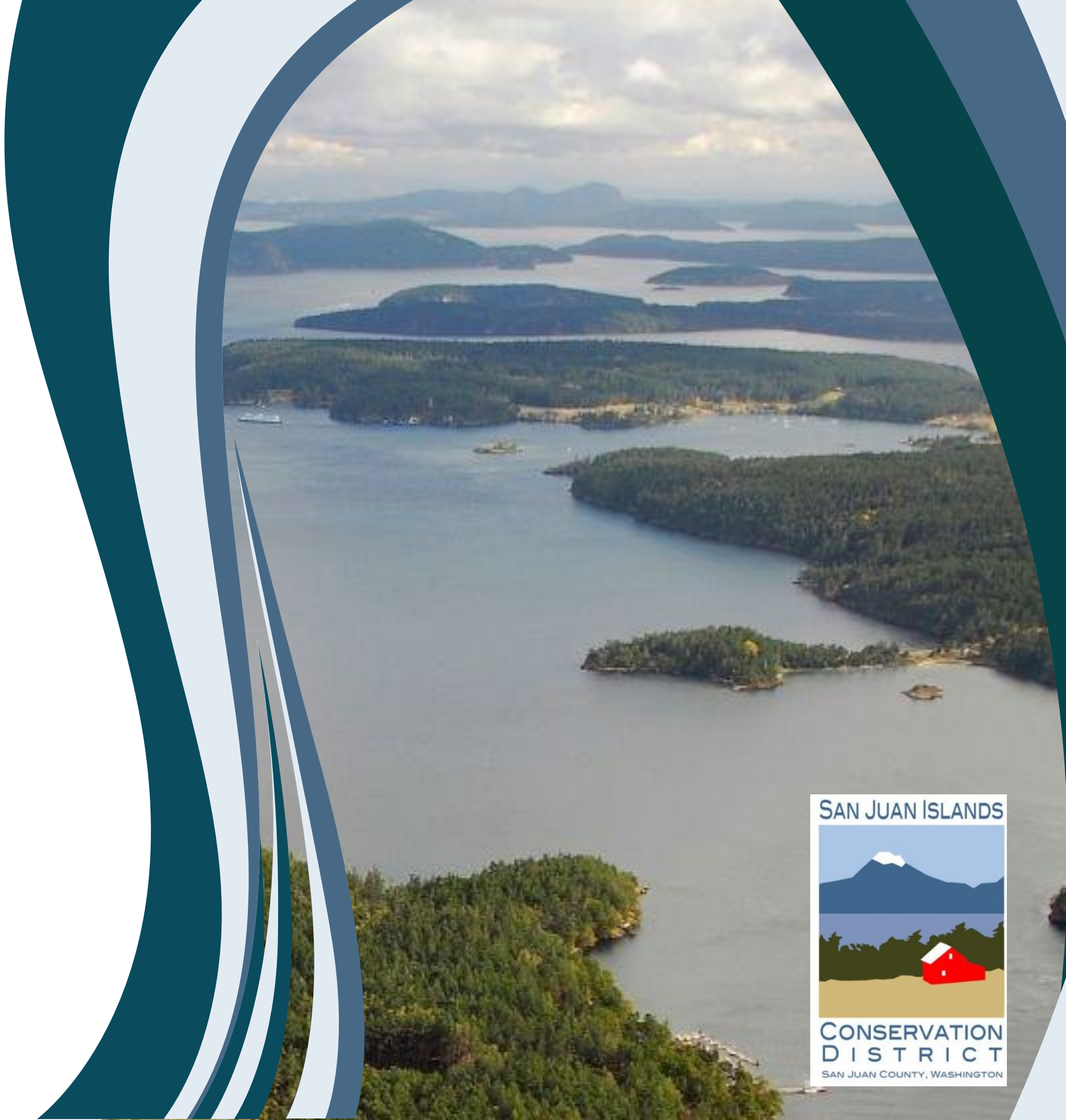


SAN JUAN COUNTY



COMMUNITY WILDFIRE PROTECTION PLAN

PUBLIC MEETING



TODAY'S DISCUSSION WILL ADDRESS...

- **THINKING ABOUT WILDFIRE**
- **OVERVIEW OF A COMMUNITY WILDFIRE PROTECTION PLAN (CWPP)**
- **WILDFIRE IN THE SAN JUAN ISLANDS**
- **WILDFIRE RISK AND HOW THAT'S ANALYZED**
- **MITIGATION STRATEGIES AND SUCCESS STORIES**
- **WILDFIRE RESPONSE RESOURCES**
- **FURTHER INVOLVEMENT**

QUESTION...

**DO YOU THINK SAN JUAN
COUNTY IS AT RISK TO WILDFIRE?**

EVEN ONE WILDFIRE IS TOO MANY

**While a *fire* can
destroy a home**



**A *wildfire* can destroy
an entire community**



WE CAN ALL BE PART OF THE SOLUTION

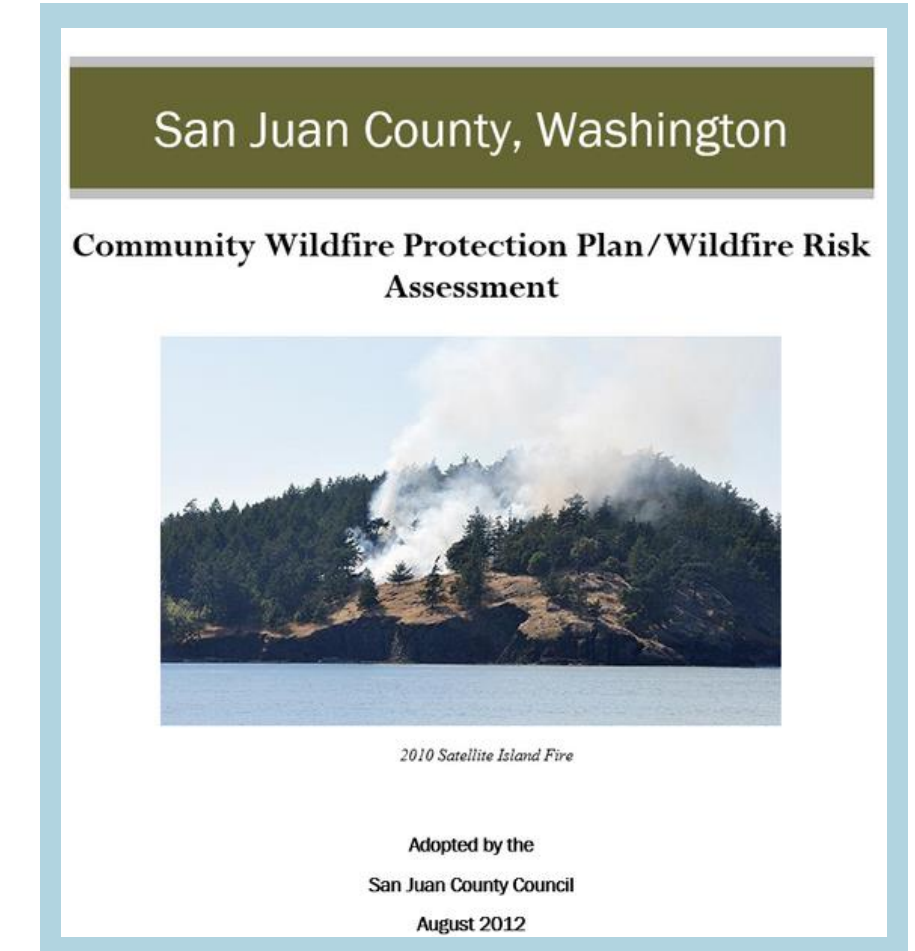
Working together, with continued restoration, vigilance, and education, we can make San Juan County more resilient to wildfire.



WHAT IS A CWPP AND WHY HAVE ONE?

A Community Wildfire Protection Plan:

- Examines and describes wildfire risk
- Considers resources at risk and resources available for wildfire protection
- Identifies priority areas where action is needed
- Recommends projects designed to reduce wildfire impact
- Develops a strategy that involves many stakeholders and partners



WILDFIRE IN SAN JUAN COUNTY

- 80 ignitions have occurred across San Juan County since 2012, burning ~47 acres
- Changes to the landscape and the climate have occurred over time
- In recent decades fire frequency is low but there is a potential for large, high impact wildfires
- Preventative planning can reduce overall impact and loss from wildfire



HISTORIC

TODAY

WILDFIRE RISK ANALYSIS

SEVERAL COMPONENTS ARE
EVALUATED TO DETERMINE
WILDFIRE RISK



TOPOGRAPHY



FIRE REGIME



FUELS



EXPOSURE



WILDLAND URBAN INTERFACE (WUI)

Areas where wildland vegetation meets urban developments or where forest fuels meet urban fuels such as houses. The WUI encompasses not only the interface (areas immediately adjacent to urban development), but also the surrounding vegetation and topography.

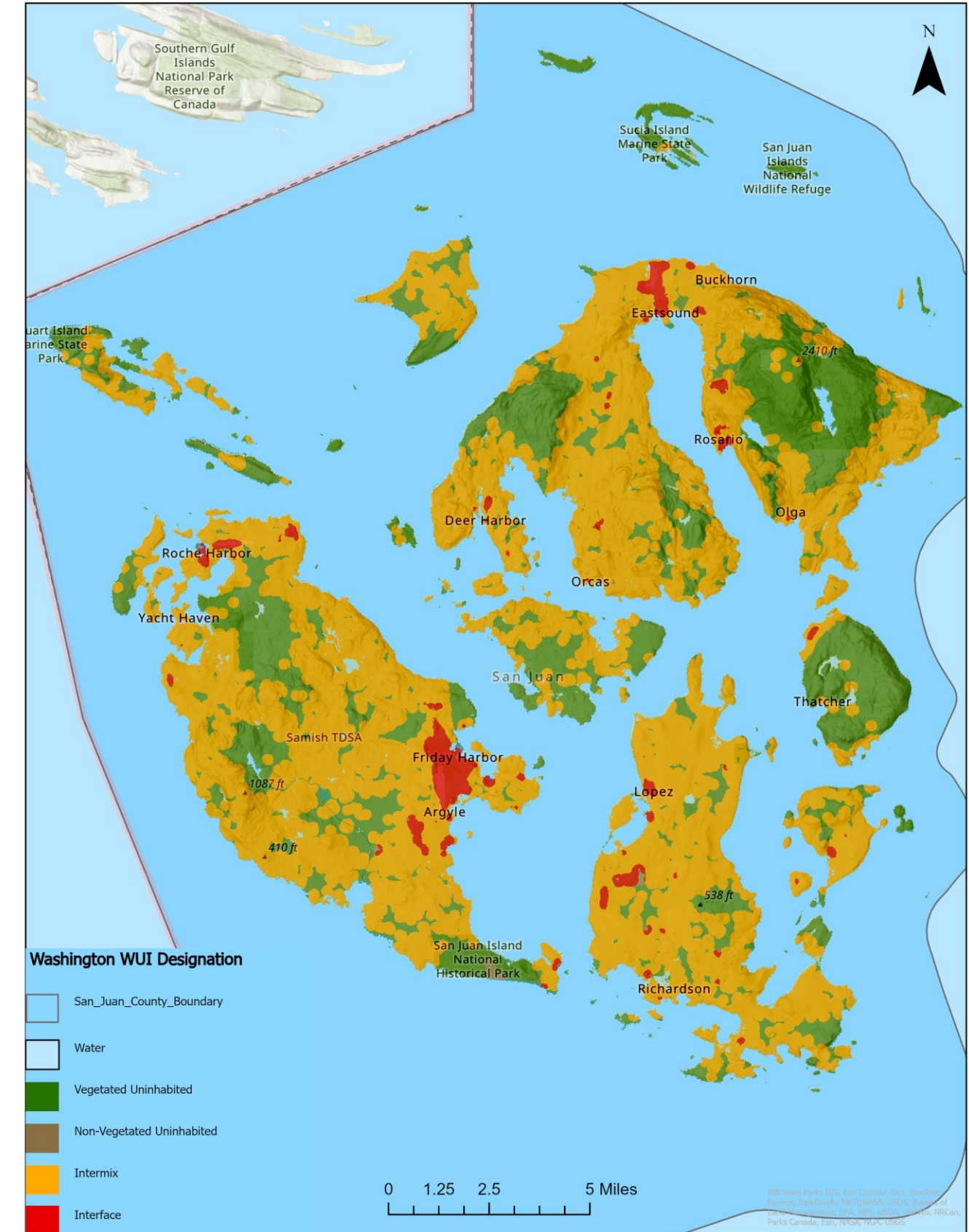
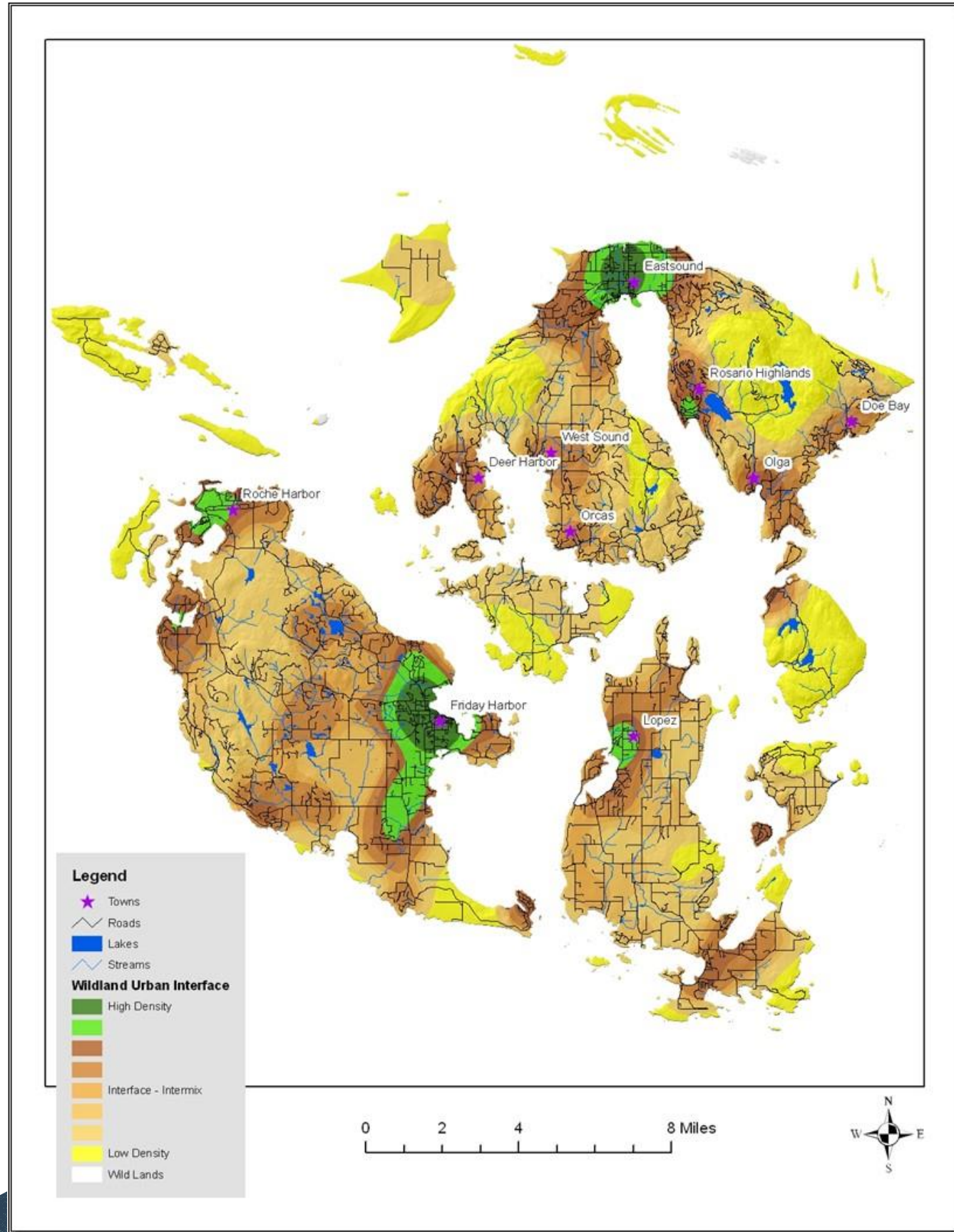
HOW DO WE MAP IT?

HOW DO WE USE IT?

SAN JUAN CO. WUI MAP

2012 CWPP

CURRENT UPDATE





**WHAT DOES WILDFIRE
PREPAREDNESS LOOK LIKE
TO YOU?**

MITIGATION STRATEGIES

Make these detailed and include long-term goals. It will make applying for future funding easier!



**EDUCATION
& OUTREACH**



**PLANNING
& POLICY**



**CAPACITY
BUILDING**



**MITIGATION
PRACTICES**

SUCCESS STORY #1

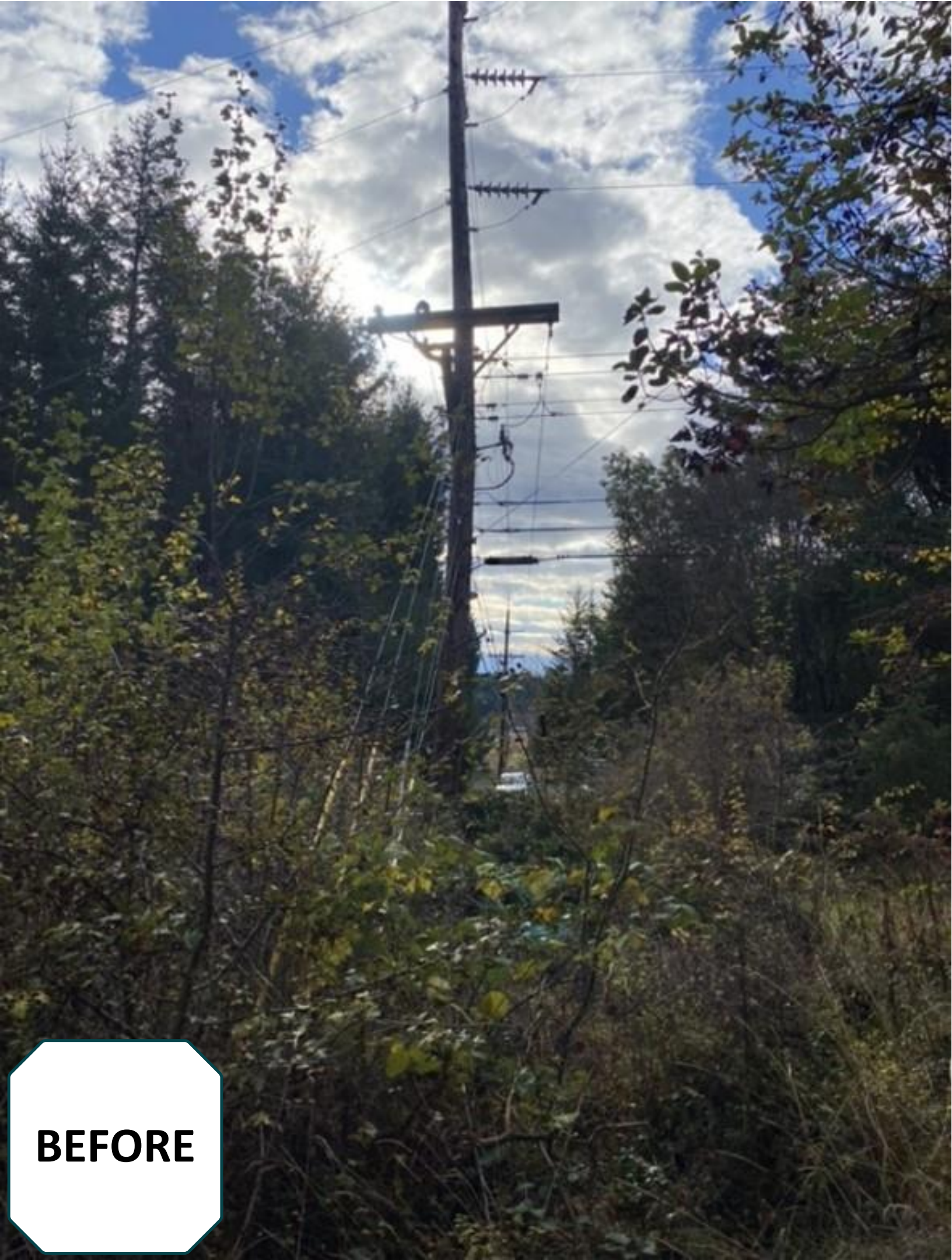


BEFORE

**2021: Neck Point, Shaw Island
Fuel Break along county road.**



AFTER



BEFORE

SUCCESS STORY #2

**OPALCO
Powerline
Clearing**



AFTER

SUCCESS STORY #3:



**GORSE REMOVAL DOE BAY
OF
ORCAS ISLAND
YCC**



A scenic view of a rocky coastline. In the foreground, dark, jagged rocks are scattered across the ground. The middle ground shows a body of water, likely a bay or fjord, with a small lighthouse perched on a rocky cliff in the distance. The background features a blue sky with scattered white clouds. The overall scene is bright and clear.

**WILDFIRE RESPONSE
IN SAN JUAN COUNTY IS...**

WILDFIRE RESPONSE

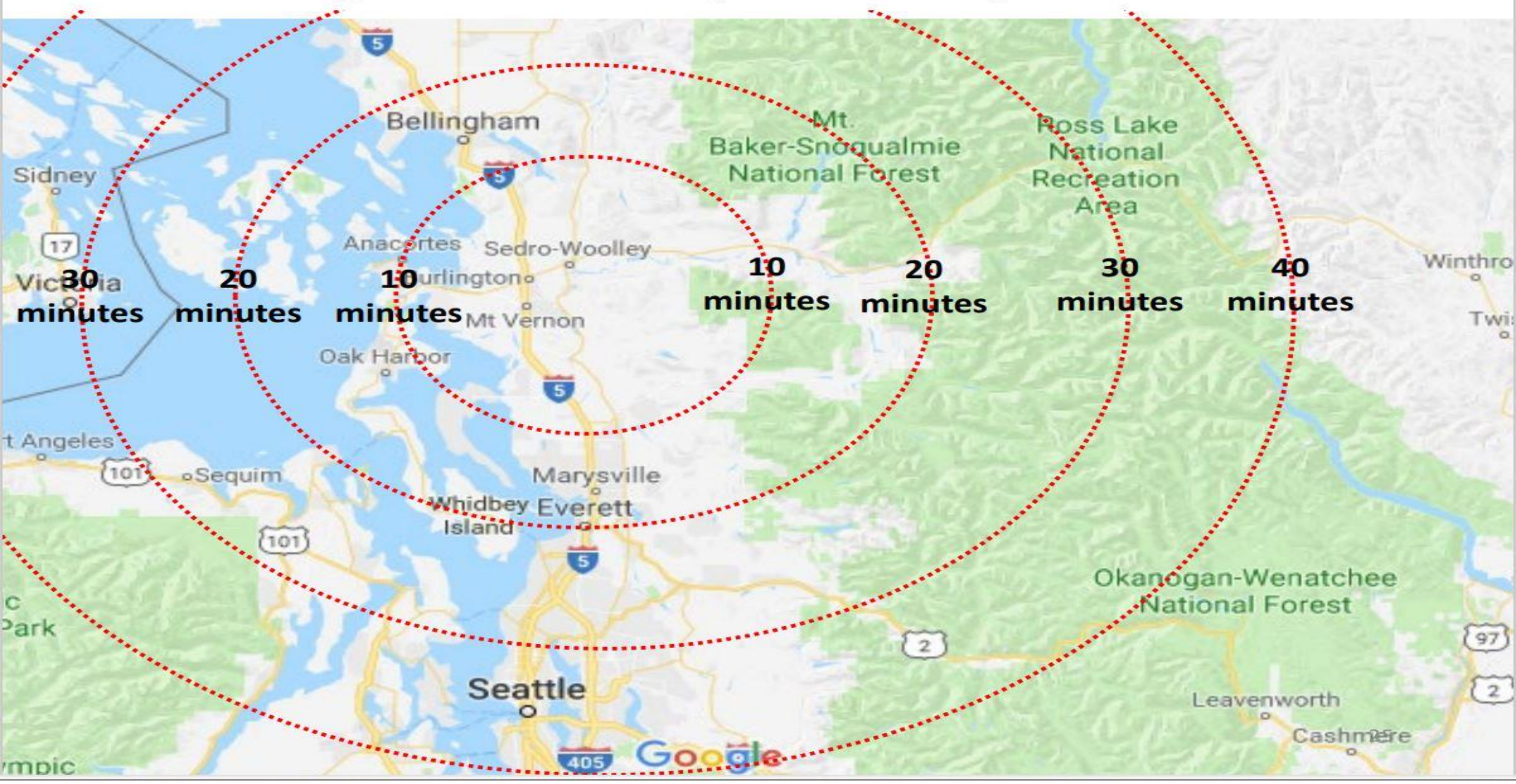
- **DNR-led response to all wildfires in San Juan County. DNR resources and response times have been significantly improved since 2012.**
- **Organized Fire Districts on Lopez, Shaw, Orcas, and San Juan Islands with paid and volunteer firefighters.**
- **Some of the smaller islands have community fire brigades.**
- **Fire Districts all have firefighters trained for wildland fire response and wildland firefighting equipment.**



WILDFIRE RESPONSE: DNR RESOURCES AVAILABLE

- **Aircraft for rapid initial attack**
- **26' Munson landing craft in Anacortes**
- **1 helicopter**
- **10 four-person Fire Engine Crews**
- **2 ten-person Fire Suppression Modules**
- **1 Bulldozer**
- **1 Excavator**

NW Region Helicopter Response Times



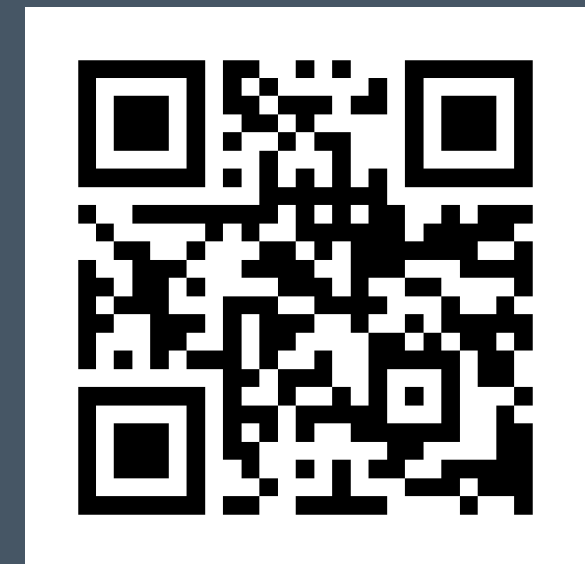
WAYS TO GET INVOLVED

LEARN MORE:

<https://www.sanjuanilandscd.org/wildfire-preparedness>

FEEDBACK FORM:

<https://arcg.is/1nLnCj1>



IN JANUARY: CWPP DRAFT REVIEW

CWPP UPDATE NEXT STEPS

- **Ongoing Document Development – now through December:**
 - **Collect and Incorporate Public Input**
 - **Continue Wildfire Risk Analysis**
 - **Develop Wildfire Mitigation Strategy**
- **Steering Committee Draft Review – January**
- **Final Draft Public Review and Comment Period – February**

QUESTIONS?

